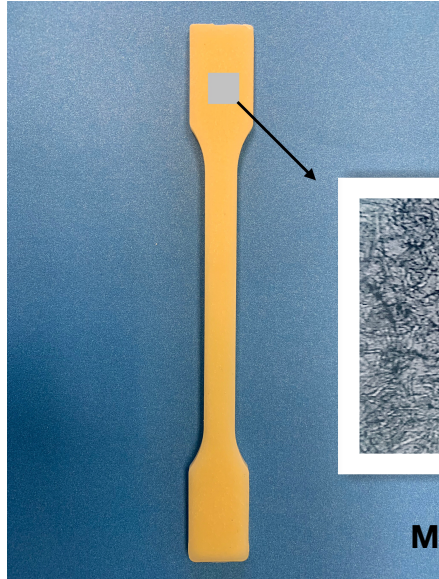
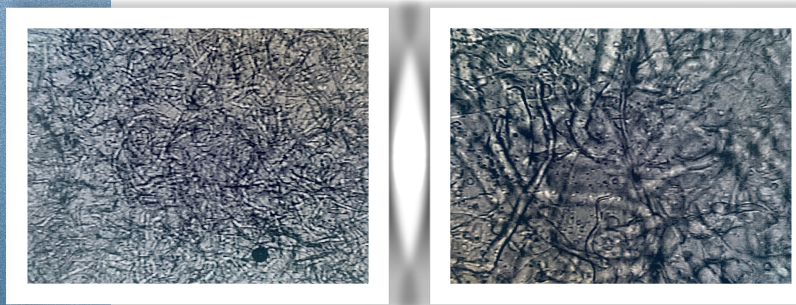


**POLYPROPYLENE COMPOSITE - AUTOMOTIVE APPLICATION \*  
 (PP-1835)**



**\*18% MICRO HEMP FIBER in 35 MFR PP**



**MAGNIFIED 100 X**

**MAGNIFIED 400 X**

**COMPOSITE (PP-1835) ... PHYSICAL PROPERTIES**

- . MELT FLOW RATE ASTM D 1238, 230C/2.16 kg. — — — 21 g/10 min.
- . FLEXURAL MODULUS, ISO 178, MPa — — — — — 2380.0
- . FLEXURAL STRENGTH, ISO 178, MPa — — — — — 52.9
- . ELONGATION, ISO 527, % — — — — — 5.2
- . TENSILE STRENGTH, ISO 527, MPa — — — — — 40.5
- . TENSILE MODULUS, ISO 527, MPa — — — — — 1458.8

**COMPOSITE (PP-1835) vs COMMERCIAL 25% HEMP FILLED POLYPROPYLENE****PHYSICAL PROPERTIES:**

MELT FLOW INDEX, ASTM D1238, 230C/2.16Kg.  
TENSILE STRENGTH, ASTM D 638, psi.  
ELONGATION, ASTM D 638, %.  
FLEXURAL MODULUS, ASTM D 790, psi.  
IZOD IMPACT, ASTM D 256, ft. Lbs/in.

**COMPOSITE PP-1835**

21 g/10 min  
5,874  
5.2  
352,876  
1.6

**25% HEMP FILLED PP**

22.4 g/10 min  
2,000  
15.3  
153,800  
1.4

**PELLET COLOR:**

LIGHT TAN

DARK BROWN

**PELLET/COMPOUND ODOR:**

SLIGHT

DEFINED

